



FOR LEASE

HIGHWAY #1

VIRDEN, MANITOBA

FREESTANDING AUTOMOTIVE BUILDING

Property Summary

Available	4,500 SF +/-
Minimum Rent	\$2,300/month
Property Taxes (2008)	\$3,075

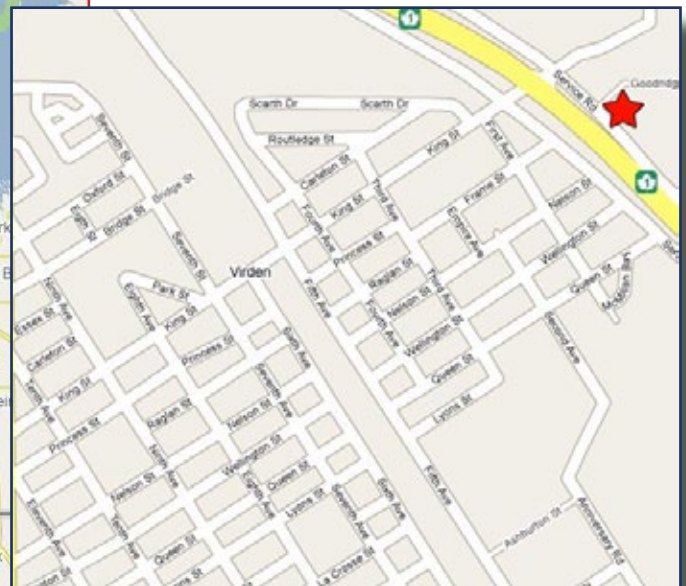
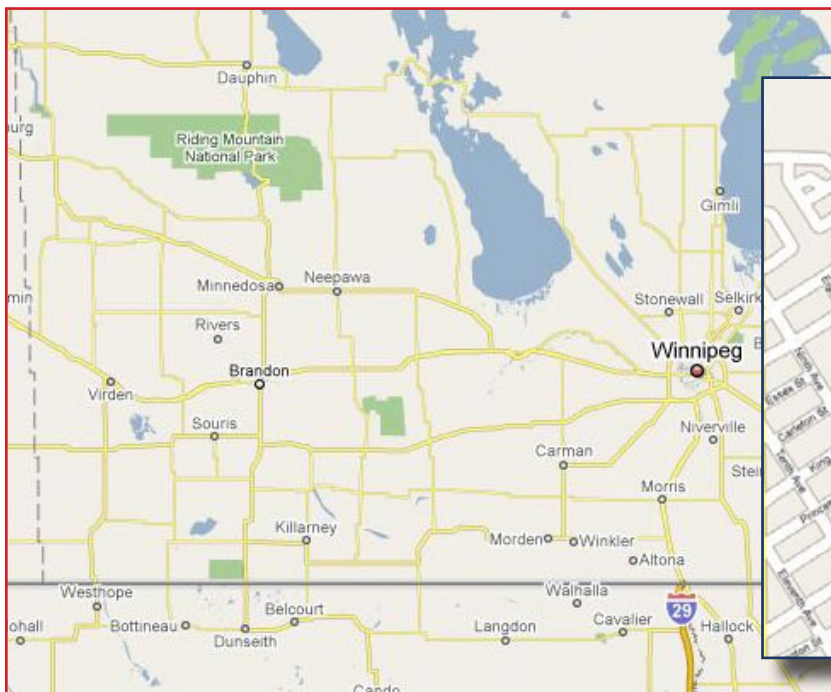
Features

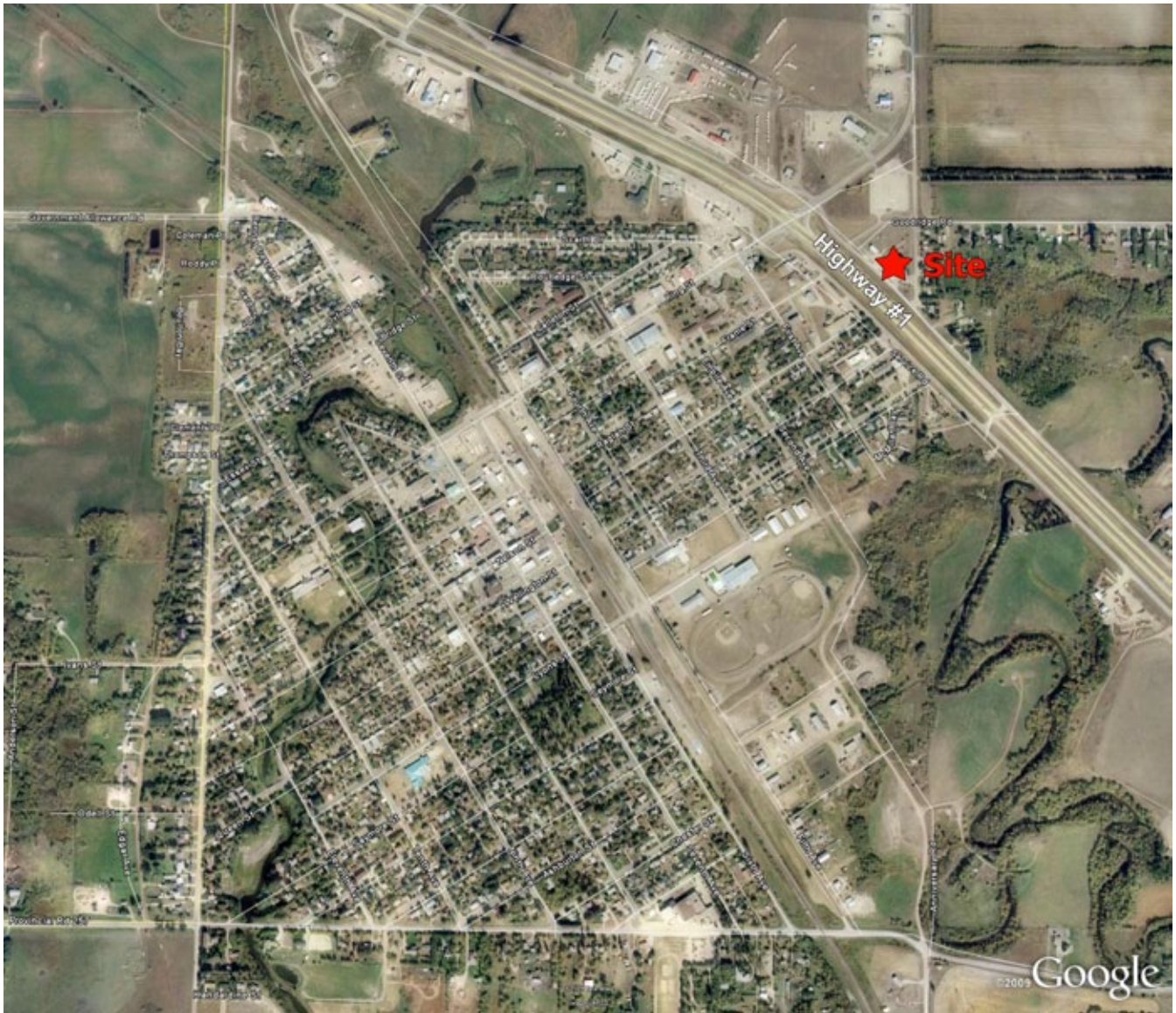
- 3 bay automotive building
- Large lot for outside storage/compound
- Ample parking
- Excellent highway exposure at the gateway to Virden, MB.

Demographics

	Virden
Total Population	3,075
Private Households	1,378
Average Age	44.9
Avg Household Income	\$53,309

(Reference: Statistics Canada 2006 Census)





HIGHWAY #1, VIRDEN, MB

LEASING INQUIRIES

SHINDICO REALTY INC.

SHINDICO REALTY, MICHAEL STRONGER*

*SHINDICO REALTY, MICHAEL STRONGER and SHINDICO REALTY are affiliated Brokers

200-1355 Taylor Avenue
Winnipeg, Manitoba R3M 3Y9

Direct: (204) 928-8237
Mobile: (204) 793-3448
Phone: (204) 474-2000 - Fax: (204) 284-7115
Email: mstronger@shindico.com
www.shindico.com

Shindico

Succeeding By Helping Others Succeed

The information contained herein is based upon materials secured from sources that we believe to be reliable, however Shindico Realty Inc. and any other parties affiliated or associated with it make no representations or warranties, express or implied, as to the accuracy of the information including as to size, age or exact location and such parties assume no responsibility for any errors and/or omissions with respect thereto. The reader shall be responsible to assure itself as to the accuracy of any information contained herein and bears all risk with respect to any inaccuracies. 062409